



## 6X20 *SCREEN*PLANT WITH INTEGRATED FEED CONVEYOR

For producers that demand multi-product screening, the 6x20 Screen Plant with Integrated Feed Conveyor can produce up to four products simultaneously, three with absolute sizing, or return the oversized product for further reduction.

### **PRIMARY FEATURES**

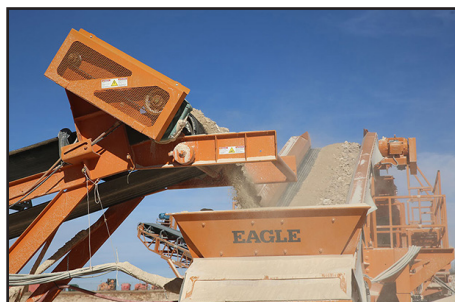
- » Integrated 45" feed conveyor remains on for transport and eliminates the need for a separate feed conveyor.
- 1 Discharge chutes for top and middle decks can be mounted to discharge material to either side of the plant.
- 2 Features screen service platforms for both sides of the screen that remain on for transport.
- » 6x20 three-deck, triple-shaft screen.
- » Hydraulic lift and leveling system enables quick and easy set up and tear down with 4-leg version or available as a 6-leg version for complete run-on capabilities.



### **ADDITIONAL FEATURES**

- » Complete screen plant system. Just add radial stacking conveyors for stockpile capabilities.
- » Produces up to four products simultaneously, three with absolute sizing, or return the oversized product for further reduction.
- » The fines conveyor feeds onto a cross conveyor that can be mounted to discharge material on either side of the plant.
- » The bottom deck cross conveyor can be mounted to discharge material to either side of the plant.
- » Includes all-electric motors and electrical cords.
- » Functions with controls built into our primary crusher for system integration or with an optional independent control system for stand-alone operation and easy integration into custom systems.

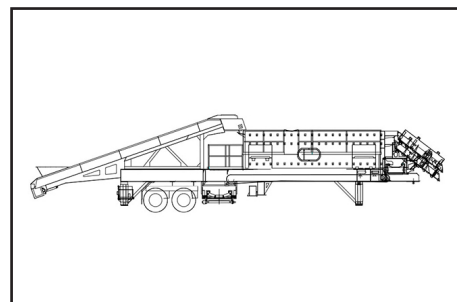
# 6x20 SCREEN WITH INTEGRATED FEED CONVEYOR



*Integrated 45" feed conveyor remains on for transport and eliminates the need for a separate feed conveyor.*



*Includes all-electric motors and electrical cords.*



## 6X20 SCREEN WITH INTEGRATED FEED CONVEYOR TECHNICAL SPECIFICATIONS\*

Model	
Screen	6x20 Three Deck
Operating Length	59' 6" / 18.1M
Operating Width	14' / 4.3M
Operating Height	14' 7" / 4.4M
Gross Weight	60000lbs / 27200kg
Travel Length	60' / 18.3M
Travel Width	11' 11" / 3.6M
Travel Height	13' 5" / 4.1
Bottom Screen Deck Cross Conveyor Width	24" / 610mm
Under Screen Conveyor Width	60" / 1524mm
Retractable Fines Cross Conveyor Width	36" / 42" optional / 914mm / 1067mm optional
Plant feed Conveyor Width	45" / 1143mm

\*Design specifications subject to change without notice.